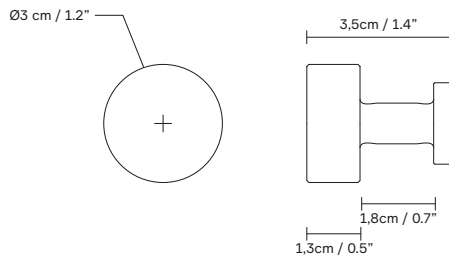


Angle Hooks, Large

Product Fact Sheet

Angle Hooks, Large

No. (3301) Angle Steel Hook, large / No. (3300) Angle Brass Hook, large /
No. (3302) Angle Hook Black, large



Dimensions:

Ø 3 cm / 1.2", D: 3,5 cm / 1.4"

Product description:

The hook has been created from a single piece of lathe turned solid steel/brass. The grid surface provides a structure that is pleasant to the touch and keeps clothes and towels from slipping off. Depending on your preference you can either let it patinate, so it attains a darker shade, or keep it polished and shiny. The hook is also well-suited as a handle on drawers, cupboards, etc.

Designer's thoughts:

"With the wall hook we wanted to underline the recurring and fantastic material with the grid surface" – Herman Studio

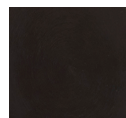
Finish:



Matt
blasted



Brass



Matt black
coated
Ral 9005
gloss

Made-to-order:

Non-standard configurations (special colors etc.) are available upon request at a minimum order quantity

Product type: Hook

Environment: Indoor

Material: Solid stainless steel
Solid raw brass

Country of origin: Denmark

Net weight: 120g / 0.2 lb

Designed by/year of design: Herman Studio, 2019

Pre-assembled: Yes

Contract use: Yes

Note: Includes socket button screw, wall plug, and T-nut screw

Scope of application: Hook, cupboard handle

Warranty: Form & Refine provides a five-year product warranty

Additional resources: [Link to image bank, 2D/3D files](#)

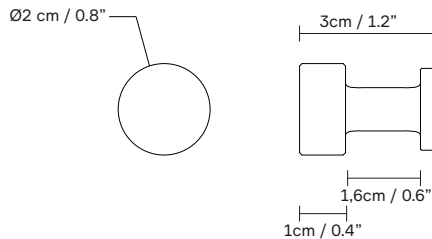


Angle Hooks, Small

Product Fact Sheet

Angle Hooks, Small

No. (3306) Angle Hook Steel, small / No. (3305) Angle Hook Brass, small /
No. (3307) Angle Hook Black, small



Dimensions:

Ø 2 cm / 0.8", D: 3 cm / 1.2"

Product description:

The hook has been created from a single piece of lathe turned solid steel/brass. The grid surface provides a structure that is pleasant to the touch and keeps clothes and towels from slipping off.

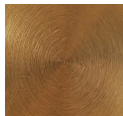
Designer's thoughts:

"With the wall hook we wanted to underline the recurring and fantastic material with the grid surface" – Herman Studio

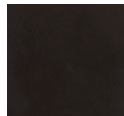
Finish:



Steel Matt
blasted



Brass Matt
lacquer



Black Matt
PVD coated

Made-to-order:

Non-standard configurations (special colors etc.) are available upon request at a minimum order quantity

Product type: Hook

Environment: Indoor

Material: Solid stainless steel
Solid raw brass

Country of origin: Portugal

Net weight: 80g / 0.1 lbv

Designed by/year of design: Herman Studio, 2019

Pre-assembled: Yes

Contract use: Yes

Note: Includes socket button screw, wall plug, and T-nut screw

Scope of application: Hook, cupboard handle

Warranty: Form & Refine provides a five-year product warranty

Additional resources: [Link to image bank, 2D/3D files](#)